



**unine**<sup>o</sup>  
Université de Neuchâtel  
Faculté des sciences  
économiques

**Hes**·SO  
Haute Ecole Spécialisée  
de Suisse occidentale  
Fachhochschule Westschweiz  
University of Applied Sciences and Arts  
Western Switzerland

swissuniversities

Transdisciplinary Institute of Social Work (ITTS)

# INFORMATION SESSION : PHD PROGRAMME IN SOCIAL WORK

Thursday 21 March 2024, 12h00-14h00

**Barbara Waldis, Director and Professor ITTS, Faculty of Economics and Business**



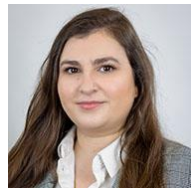
# Table of content

- Who is part of the team of ITTS?
- What about the creation process of ITTS?
- What are the goals of ITTS?
- What is specific about ITTS?
- What are the most important building blocks at ITTS?
- How does ITTS consider the discipline of social work?
- Who are the PhD students of ITTS?
- Why do you need a PhD in social work?
- What is specific about the ITTS PhD program?
- How to find two PhD codirectors?
- How to plan and to finance a PhD?
- How does the PhD process at the ITTS work?
- How is the PhD programme structured?
- What seminars does the ITTS offer?
- How about other doctoral seminars?
- What conditions exist for registration as PhD student at the ITTS?
- What is in an application as PhD student at UNINE?

# Who is Part of the Team of the ITTS



**Florence Manzoni**  
Administrative Collaborator  
[florence.manzoni@unine.ch](mailto:florence.manzoni@unine.ch)



**Marta Marques Castanheira**  
PhD Student, Assistant (50%)  
[marta.marques@unine.ch](mailto:marta.marques@unine.ch)



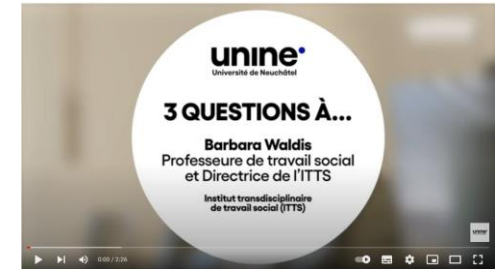
**Ophélie Bidet**  
Scientific Collaborator (50%)  
[ophelie.bidet@unine.ch](mailto:ophelie.bidet@unine.ch)



**Michaela Slotwinski**  
Professor (50%; from 1.8.24 on)  
[michaela.slotwinski@econ.uzh.ch](mailto:michaela.slotwinski@econ.uzh.ch)



**Barbara Waldis**  
Professor (50%), Director  
[barbara.waldis@unine.ch](mailto:barbara.waldis@unine.ch)

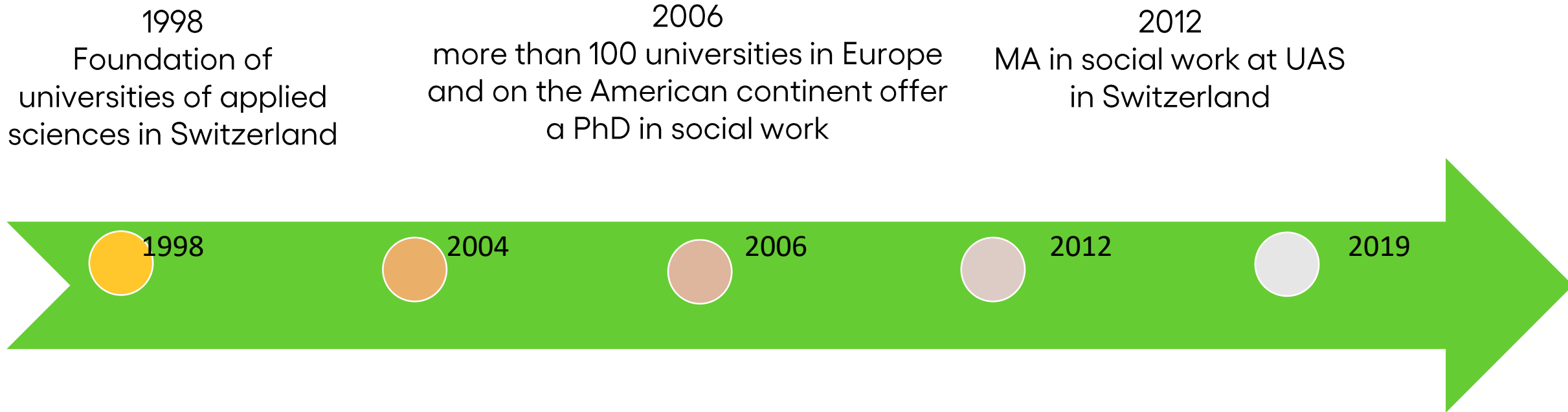


<https://www.youtube.com/watch?v=hrrnLkWTt0p0>



<https://www.youtube.com/watch?v=7Kazr4ElohQ>

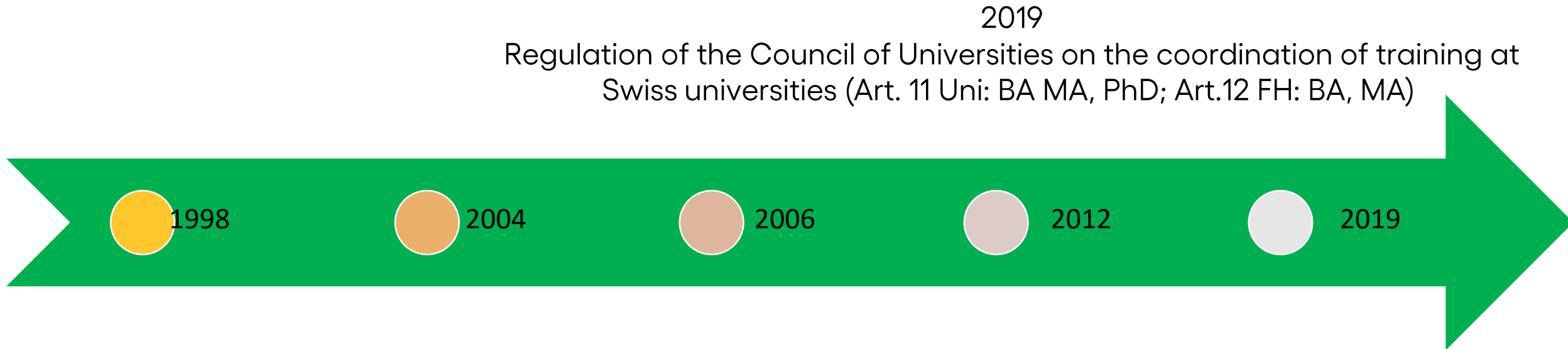
# Creation process of the ITTS I: International Academic Context



2004  
Schools of social work as  
universities of applied sciences (BA)

PhD in social work in USA, Canada, UK, Portugal,  
Germany, Lebanon, Australia, China and Sweden

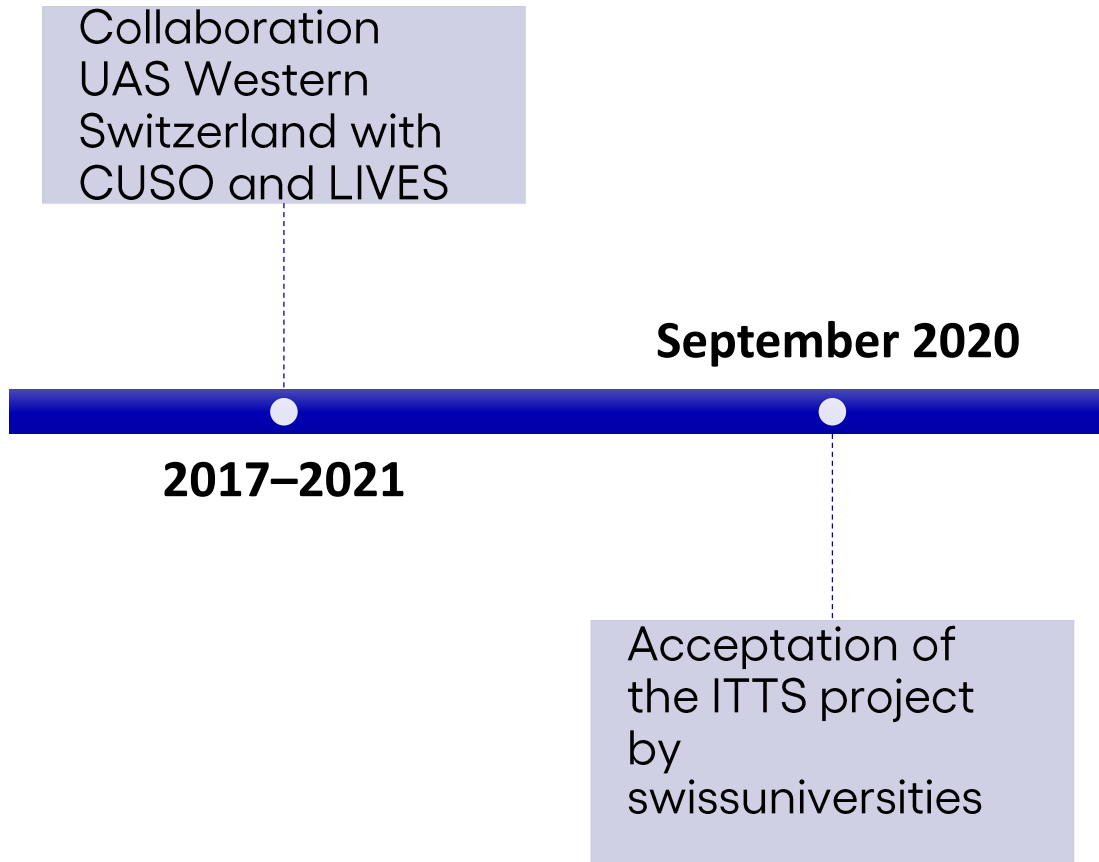
# Creation Process of the ITTS II: Legal Base



**Art. 4,2 : For the third cycle, universities and other academic institutions in the university sector offer universities of applied sciences and universities of teacher education opportunities for cooperation in a spirit of partnership.**

<https://www.fedlex.admin.ch/eli/cc/2019/722/fr> ; <https://www.fedlex.admin.ch/eli/cc/2019/722/de>

# What are the Goals of the ITTS ?



**Creation of the ITTS: February 2022**  
**First Seminars: Fall Semester 2022/23**

## Goals of the ITTS

- Institute for the PhD in Social Work
- Promotion of younger generation for social work training in the 3rd cycle
- Capability of examination of practice on the bases of theoretical foundations
- Contribution to the development of new knowledge by scientific studies in social work

# What is Specific about the ITTS?



First institute specifically and exclusively for the PhD in social work in Switzerland

**Hes**·so

A collaboration of the School of social work of the UAS Western Switzerland and the University of Neuchâtel



Hosted by the Faculty of economics and business



Transdisciplinary perspective as PhD thesis are codirected by a professor of a UAS SW and by a professor of UniNE



Holders of a MA in social work of a UAS or a MA in social sciences, law or economics have direct access

# Which are the most Important Building Blocks at the ITTS?

**Seminars on theory and methods in social work, internationally comparative, development of soft skills for research and academia**

**Development of contacts with PhD directors**

**Interfaculty and transdisciplinary development of the ITTS by co-direction, seminars, conferences, research projects**

**Collaboration with the UAS and the practice fields of social work**

**Installing a multilingual culture (French, German, Italien, English)**

**Consideration of the different topical fields of social work**



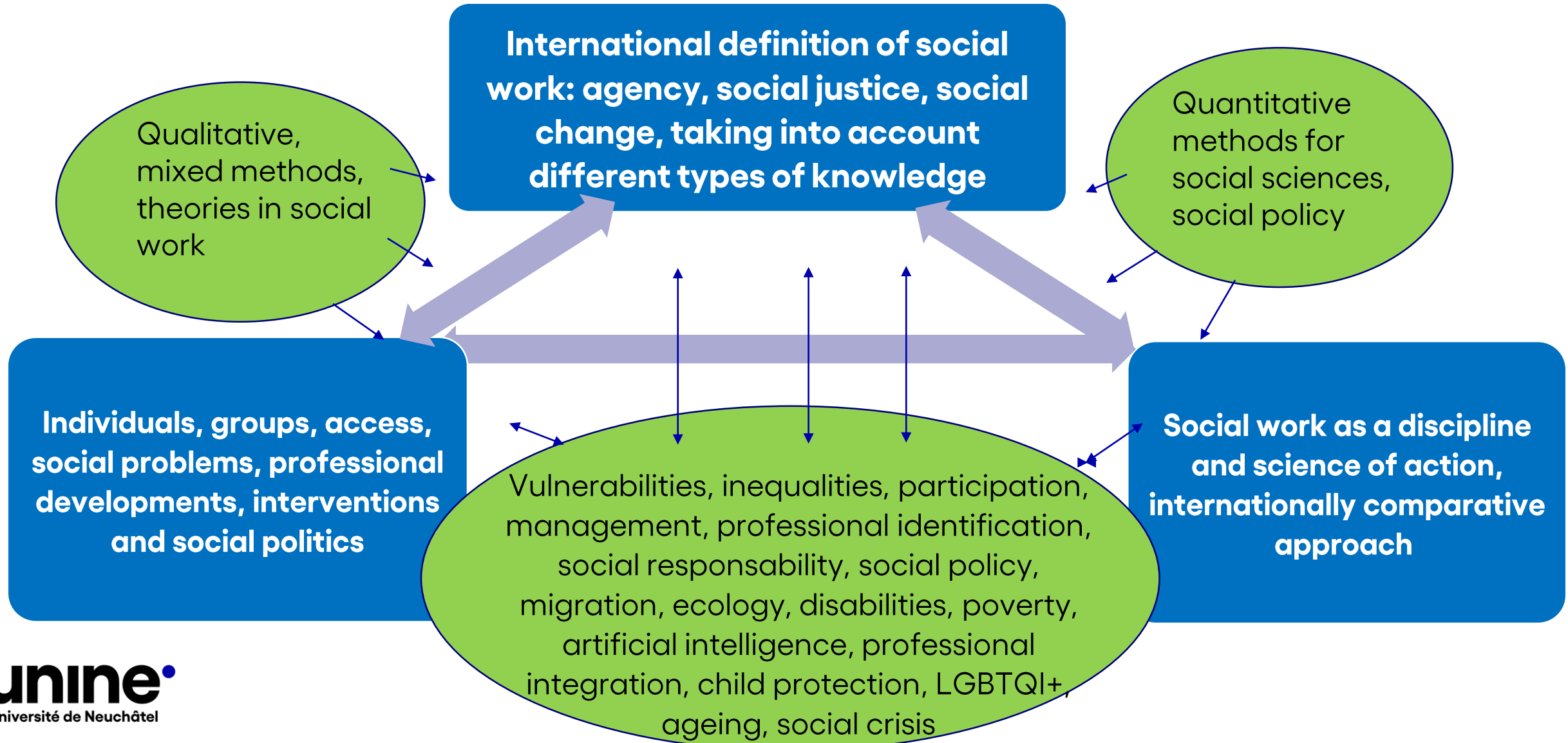
# Global Definition of Social Work

The following definition was approved by the IFSW General Meeting and the IASSW General Assembly in July 2014:

## Global Definition of the **Social Work Profession**

“Social work is a practice-based profession and an academic discipline that promotes social change and development, social cohesion, and the empowerment and liberation of people. Principles of social justice, human rights, collective responsibility and respect for diversities are central to social work. Underpinned by theories of social work, social sciences, humanities and indigenous knowledges, social work engages people and structures to address life challenges and enhance wellbeing. The above definition may be amplified at national and/or regional levels.”

# How does ITTS consider Social Work as Discipline?



# PhD Students – Registration Fall Semester 22/23

- Marta Marques Castanheira, ***Social inequality and professional perspectives for first generation migrant youth*** (sociology/anthropology, HETSGE/ ITTS, Milena Chimienti, Barbara Waldis)
- Melanie Germann, ***Best practices of managing social institutions – perspectives of employers*** (social work / management FHNW/IMN, Peter Zängli, Cinzia Dal Zotto)
- Raquel Ricciardi, ***Socioecological responsibilities in big companies, community and workers' participation*** (political economy/anthropology, SUPSI/FLSH IE, Nicolas Pons-Vignon, Ellen Hertz)
- Albulene Ukshini, ***Death and mourning in the transnational space between Kosovo and Switzerland*** (social work / anthropology HETSL / ITTS, Marc-Antoine Berthod, Barbara Waldis)
- Lorry Bruttin, ***Ageing and diversity: no retirement for farmer – a new field for social work*** (social work / anthropology HES-SO VS/ HETSL/IE, Caroline Henchoz, Jérémie Forney)
- Daniele Bigoni, ***Male homosexuality in penal institutions and the role of social work*** (social work / sociology FHNW/ MAPS, Daniel Gredig, Philip Balsiger)
- Romain Descloux, ***The place of youth regarding socio-professional integration in social and transitional integration measures*** (social work / psychology of education HETSL/ MAPS, Stéphane Rullac, Laure Kloetzer)
- Jeremias Amstutz, ***Processes and forms of self-organized associations and institutions*** (social work / management FHNW/IMN, Peter Zängli, Emmanuelle Reuter)

# PhD Students – Registration Fall Semester 23/24

Nicole Eicher, **Child protection during covid-19**, psychology / anthropology, David Laetsch, ZHAW / Barbara Waldis, UniNE

Damaris Fischer, **Disability studies, inclusion, labor market**, social work / innovative management, Tobias Fritschi BFH / Emmanuelle Reuter, UniNE

Simon Roth, **Artificial intelligence and social work**, social work / information technology, Daniel Gredig, FHNW / Christos Dimitrakakis, UniNE


Rulla Sutter, **NGO, poverty, covid-19 in Switzerland**, social sciences / anthropology, Oliver Hümbelin BFH / Barbara Waldis UniNE

Carolina Toletti, **Othering, migration and professional training**, social work / anthropology, Maritza Le Breton, FHNW / Barbara Waldis, UniNE




# Why do you need a PhD in Social Work?


Because you are curious and keen to achieve new, systematic, solid, empirical knowledge about a specific question on a social problem



Because you plan to pursue an academic career in the discipline of social work, do high level research with official fundings and teach future social workers at BA, MA and PhD level

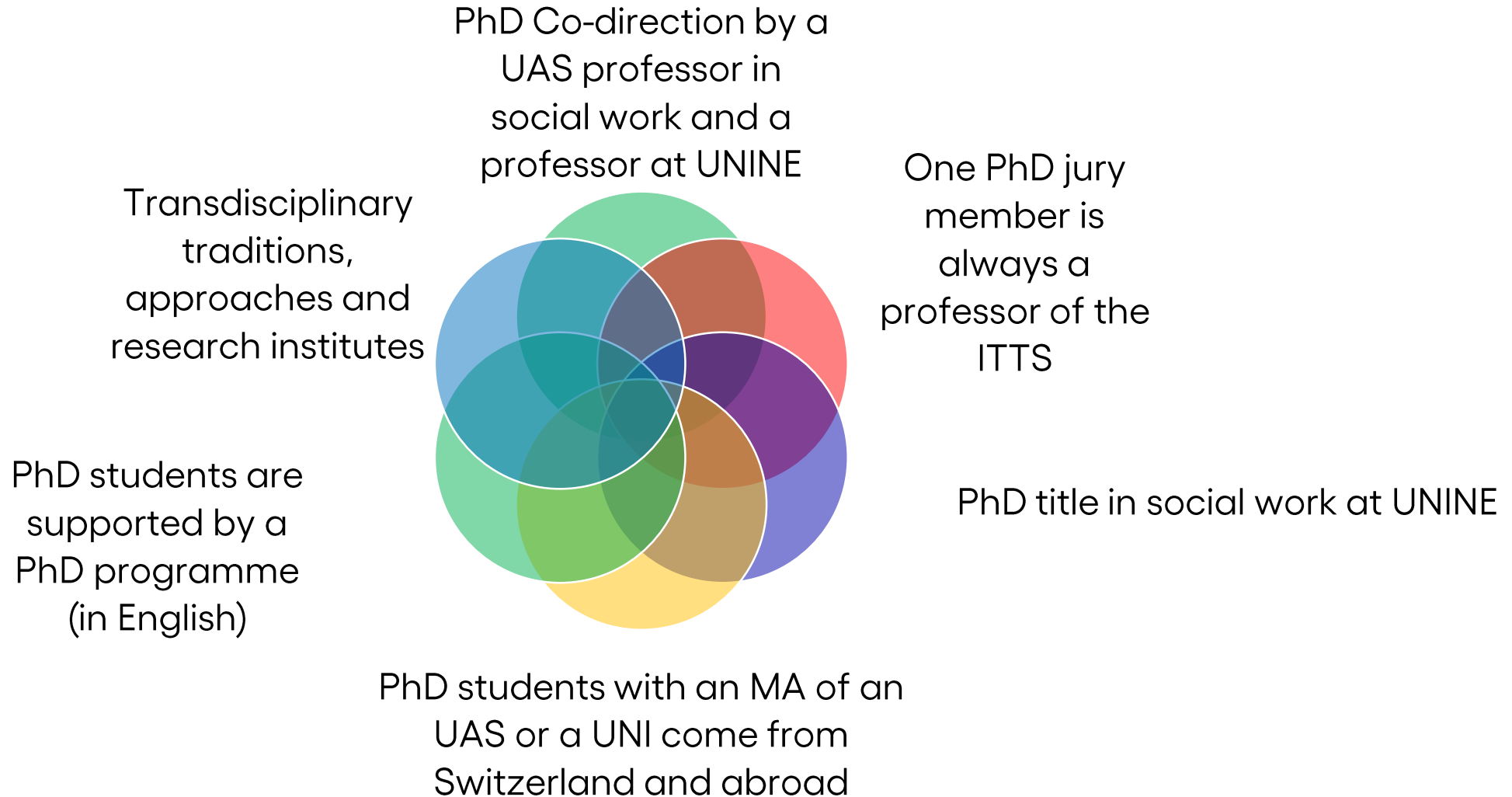


Because you strive for the equal recognition of professional knowledge in the action oriented discipline of social work next to medical doctors, lawyers, psychologists and pedagogues




Because you need to elaborate a theoretically founded, reflective positionality in your professional environment for an officially recognised leadership role in your institutional field of social work

# What is specific about the ITTS PhD Program?




# How to find two PhD codirectors?


Prepare an application with a cover letter, (at least a) one-page sketch of the PhD topic and intended research domains, a CV, copy of MA + BA titles, examination results



Send the sketch of your PhD topic to a professor at UNINE and potential codirector, ask for a meeting and/or about the conditions for being accepted (be interested in the fields of expertise of the professor, be (just a little) flexible about your topic)



Discuss this with a professor from your home institution (UAS social work) who you would like to choose as one of the two codirectors of your PhD



Send the above application to the administration (F.Manzoni) of the ITTS



Plan a meeting with the director of the ITTS with the scope to find support for the choice of the second PhD director and the individualised PhD programme

# How to plan and to finance a PhD?



**You need time** (at least 2 days a week)  
Your planning goes over 5 years (10 semesters), limit given by the regulations of Faculty of economics and business at UNINE



## **You need to be able to finance this time:**

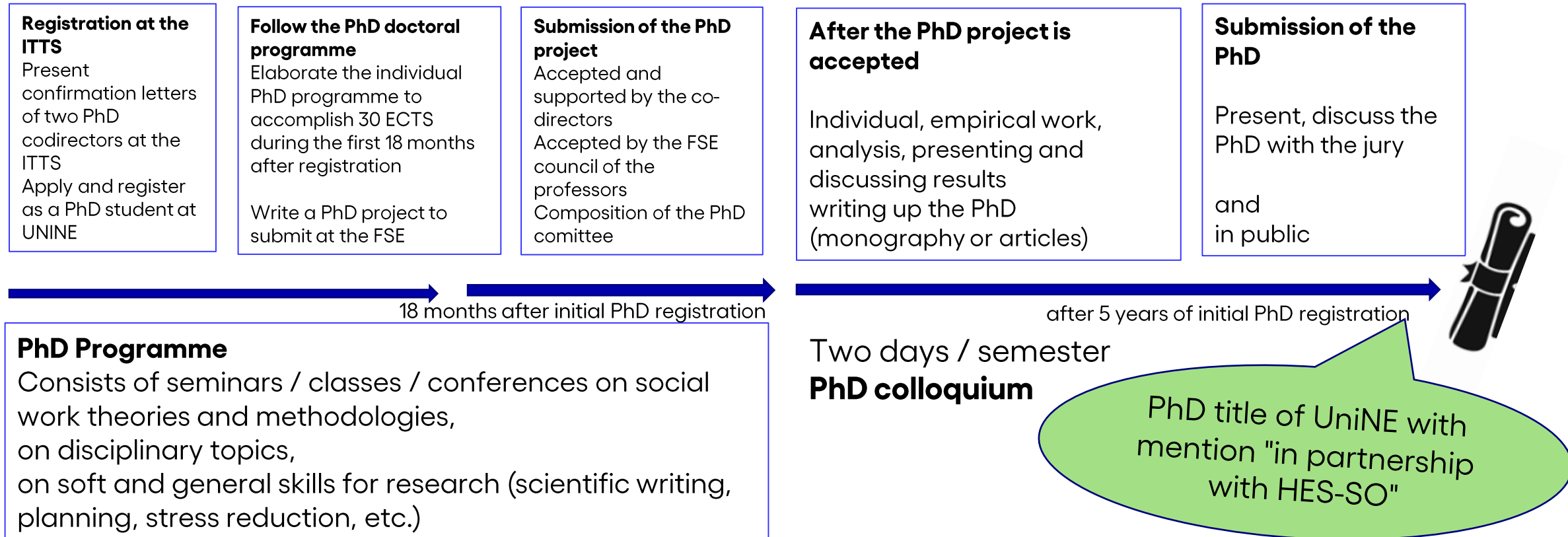
- Participate as an FNS researcher in a project
- Work as a (part-time) teaching and / or research assistant in a UAS of social work or at UNI
- Work part-time in a social institution (max. 60%)
- Apply for grants



<https://www.snf.ch/en/YyNH009fxuDiGk7U/funding/careers/docch>



# How does the Process of PhD in Social Work at the ITTS?



Regulation for the PhD at the Faculty  
<https://rsn.ne.ch/DATA/program/books/rsne/pdf/416331.pdf>

Regulation for submission and publication of the PhD  
[https://www.unine.ch/files/live/sites/systemsite/files/juridique/d\\_depottheses.pdf](https://www.unine.ch/files/live/sites/systemsite/files/juridique/d_depottheses.pdf)

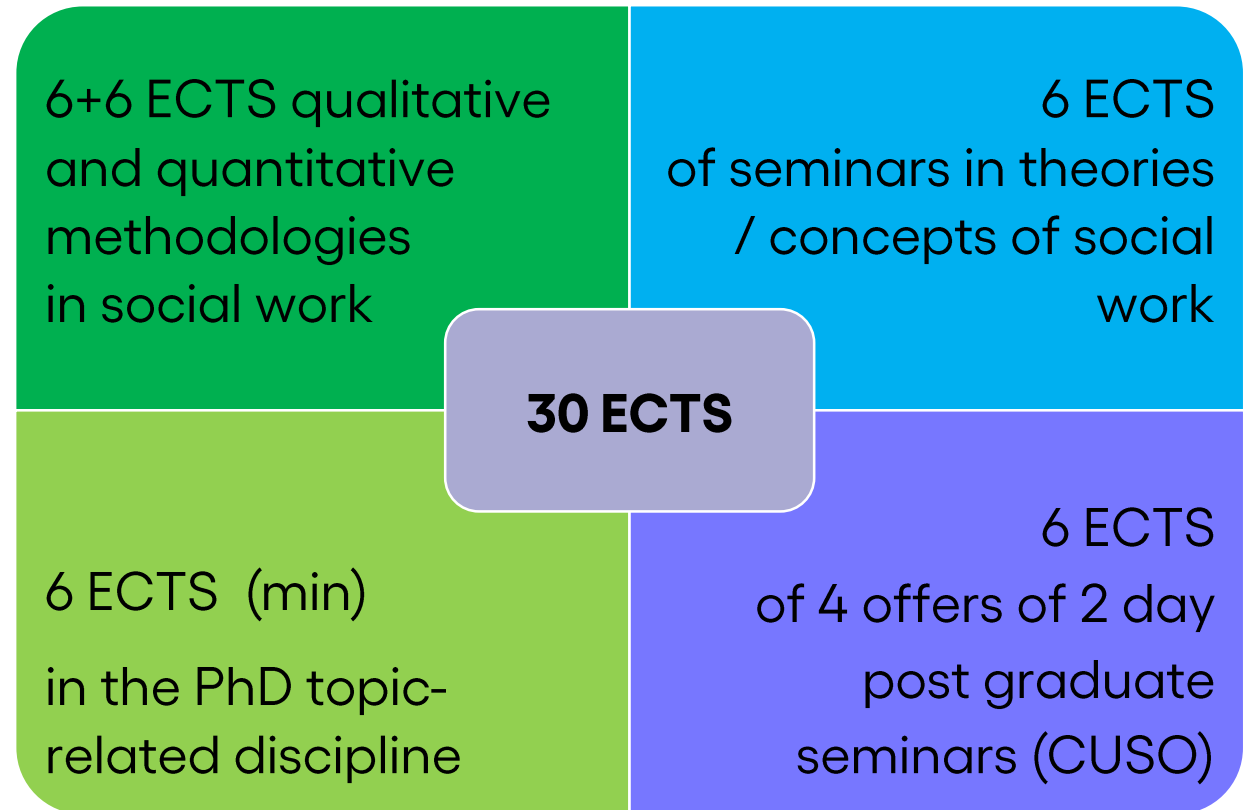
# How is the PhD Program structured?

**Each PhD-student** must complete **30 ECTS** during the first **18 months**.

The PhD student decides upon its own programme, together with the two co-directors and the direction of the ITTS.

**The individual programme of 30 ECTS is listed in the pedagogical agreement.**

The participation in **international** seminars, conferences are encouraged and the **ITTS / FSE supports** these **participations financially**.



**Registration Deadline as PhD Student  
for Fall Semester 2024 is June 30<sup>th</sup> 2024**

# Seminar Program Fall Semester 2024/25

Seminar	Professor(s)	Credits	Dates
<b>Soft Skills for Academia</b>			
<b>Starting a PhD Thesis, Entering the PhD Process (Mandatory Seminar)</b>	Barbara Waldis / Michaela Slotwinski	1.5 ECTS	Thursday, full day, 19.9.24; Friday, full day. 31.1.25
<b>Theories in Social Work</b>			
<b>Social Work Theories: Epistemologies, Classics, and Current Issues</b>	Barbara Waldis	3 ECTS	Thursday +Friday, full day, 7.+8.11.24; 5.+6.12.24;
<b>Methodologies</b>			
<b>Social Work Research Methods: Developing a PhD Project</b>	Barbara Waldis	3 ECTS	Friday, full day: 20.9.24; 4.10.24 Friday, afternoon: 18.10.24; 1.11.24; 15.11.24;
<b>Making Sense of Data: An Introduction to Quantitative Reasoning in Social Sciences</b>	Michaela Slotwinski	3 ECTS	Friday, morning: 18.10.24; 1.11.24; 15.11.24; Friday, full day: 29.11.24; 13.12.24

# Seminar Program Spring Semester 2025

Seminar	Professor(s)	Credits	Dates
<b>Soft Skills for Academia</b>			
<b>Colloquium on academic writing</b>	Emmanuelle Reuter	3 ECTS	Friday, full day, 28.2.24; Thursday +Friday full day: 13.+14.3.25; Friday, morning: 25.4. 25
<b>Theories in Social Work</b>			
<b>Social Work Theories: Decolonizing Social Work</b>	Barbara Waldis	3 ECTS	Week 7: 10-14 February 2025
<b>Methodologies</b>			
<b>Introduction to Survey (Experiment) Methods in Social Science Research</b>	Michaela Slotwinski	3 ECTS	Friday morning: 21.2.25; 7.3.25; 21.3.25; 4.4.25; Friday, full day: 16.5.25; Friday morning: 23.5.25
<b>Qualitative and mixed methods in social work &amp; social sciences</b>	Barbara Waldis	3 ECTS	Friday, afternoon: 21.2.25; 7.3.25; 21.3.25; 4.4.25; Friday, full day: 2.5.25; Friday afternoon: 23.5.25



# How about other Doctoral Seminars elsewhere?

*Other possibilities: CUSO & BENEFRİ & programme UNINE*

<https://competences.cuso.ch/en/welcome>

<https://www.unine.ch/mobilite/home/etudiant-e-de-lunine/un-cours-ou-un-pilier-ailleurs/benefri.html>

<http://www10.unine.ch/descriptifs/>

**Watch out for excellent international teaching offers (post graduate level) regarding your topic, your methods, discuss with your PhD supervisors**

# What about the individual PhD Program (Pedagogical Agreement & PhD charter UniNE)?

Seminars offered	ECTS	Semestre 1	Semestre 2	Semestre 3
<b>Soft Skills</b>				
<i>Starting a PhD, entering the PhD process (mandatory)</i>	1.5			
<i>Colloquium on Academic Writing</i>	3			
<b>Theories in Social Work (min.6 ECTS)</b>				
<i>Social work theories: epistemologies, classics, and current issues</i>	3	x		
<i>Social work theories: decolonial social work</i>	3		x	
<b>Qualitative Methodologies in Social Work (min. 6 ECTS)</b>				
<i>Social work research methods: developing a PhD project</i>	3	x		
<b>Qualitative and mixed methods in social work &amp; social sciences</b>	3		x	
<b>Quantitative Methodologies for Social Work (min. 6 ECTS)</b>				
<i>Making Sense of Data: An Introduction to Quantitative Reasoning in Social Sciences</i>	3	x		
<i>Introduction to Survey (Experiment)</i>				
<i>Methods in Social Science Research</i>	3		x	
<b>Seminars linked to the PhD Topic &amp; Methods (min. 6 - 12 ECTS)</b>	6 + 6			
	<b>Total 30 ECTS</b>			
<b>Equivalences (possible, up to 6 ECTS)</b>	-6			

## Doctoral charter

[https://www.unine.ch/files/live/sites/systemsite/files/General/UNINE\\_charte\\_doctorat\\_EN.pdf](https://www.unine.ch/files/live/sites/systemsite/files/General/UNINE_charte_doctorat_EN.pdf)

# What are the Conditions for Registration as PhD Student at the ITTS?

- MA degree from a UAS or an MA degree from a Swiss (or recognised foreign) University, average of 4.75 for the MA and a grade 5 for the Master's thesis
- A PhD in social work at ITTS requires a co-direction by a professor from an UAS (school of social work) and a professor of UniNE, confirmations from both are required for registration
- Interested students organise a meeting with the director of the ITTS before registration
- Signature of the PhD charta of UNINE  
([https://www.unine.ch/files/live/sites/systemsite/files/General/UNINE\\_charte\\_doctorat.pdf](https://www.unine.ch/files/live/sites/systemsite/files/General/UNINE_charte_doctorat.pdf))
- Establishment of an individual PhD programme for the 30 ECTS with codirectors and ITTS

# What is needed for an Application as PhD Student at UniNE?

- ✓ the [registration request form](#), completed and signed
- ✓ 2 passport-sized photographs (not scanned)
- ✓ a copy of a document which proves the candidate's identity
- ✓ a copy of completed secondary studies diploma
- ✓ a copy of the Bachelor degree diploma
- ✓ a copy of the Master degree diploma (if already obtained)
- ✓ copies of certificates of previous university education
- ✓ a copy of the agreement with the professor acting as thesis director
- ✓ a certificate of exmatriculation from the last university or Swiss high school attended



**Université de Neuchâtel**  
Immatriculations  
Avenue du 1er-Mars 26,  
CH-2000 Neuchâtel



# Thanks for the attention, now it's question-time !

Institut transdisciplinaire de travail social

[https://www.unine.ch/seco/home/instituts\\_recherche/institut-transdisciplinaire-de-t.html](https://www.unine.ch/seco/home/instituts_recherche/institut-transdisciplinaire-de-t.html)

Bureau 2.317  
A.-L. Breguet 2,  
CH-2000 Neuchâtel

For further information please contact:  
[ophelie.bidet@unine.ch](mailto:ophelie.bidet@unine.ch)

